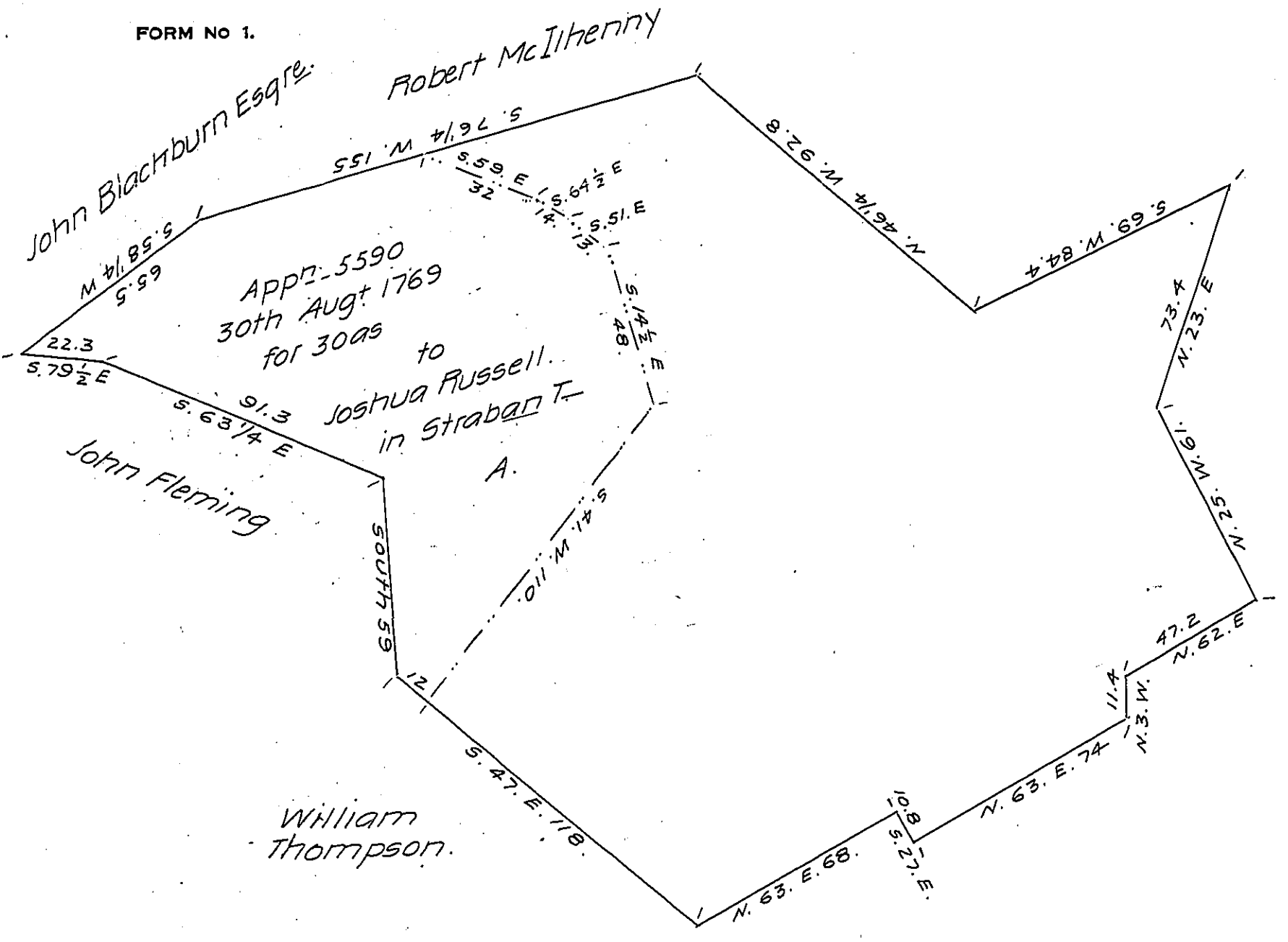


FORM No 1.



The whole of the above tract is an Interference of a tract of 299 as. 80 ps. & allise. Surveyed on Warrt for 275 as dated March 28th 1775 to Joshua Russell, situate within the Manor of Mastie in Straban Township, Adams County. Part A. containing 82 as. 20 ps & allise. Now owned by the heirs of Joshua Russell dec'd

Witness my hand

John L. Gubernator. —

IN TESTIMONY that the above is a copy of the original remaining on file in the Department of Internal Affairs of Pennsylvania, made conformably to an Act of Assembly approved the 16th day of February, 1833, I have hereunto set my Hand and caused the Seal of said Department to be affixed at Harrisburg, this twentyfourth day of August 1908

Henry Howard
Secretary of Internal Affairs.